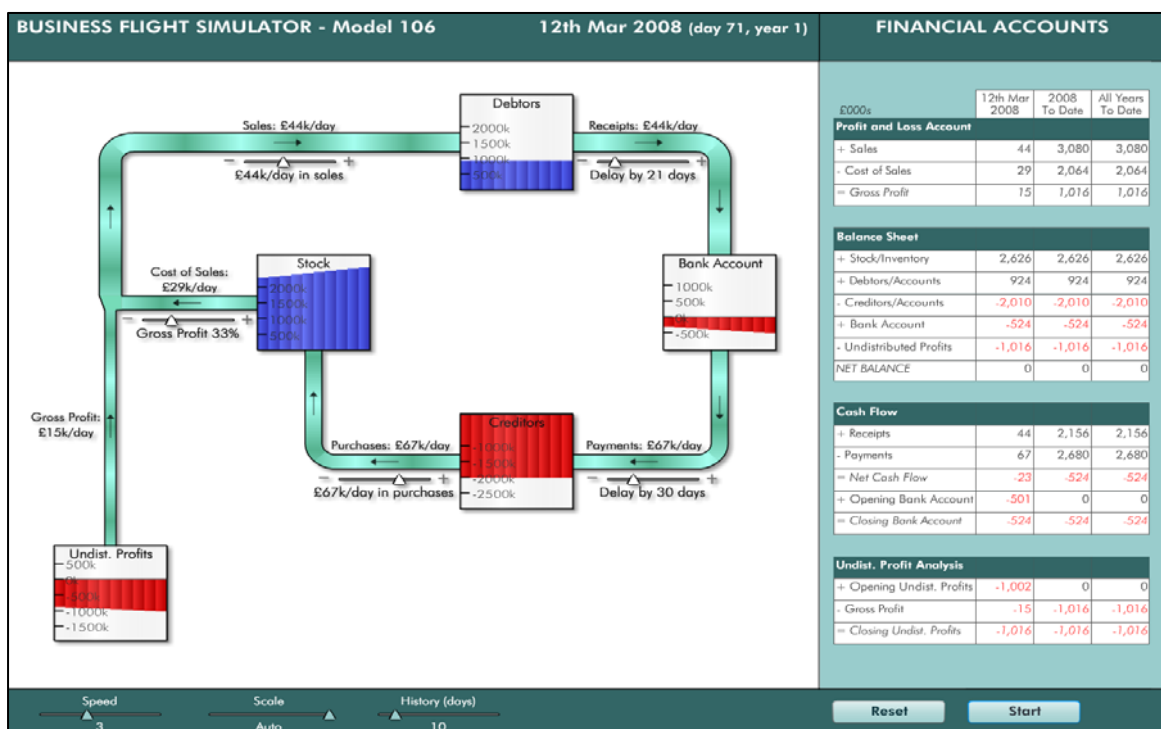


The CIMA Business Flight Simulation Certificate



Virtual classroom training sessions

April - December 2009



What are virtual classroom training sessions?

Virtual classroom training sessions provide real-time tutor-led instruction in the CIMA Business Flight Simulation Certificate for groups of trainees, who may be drawn from different organisations and based in different locations. The virtual classroom eliminates the need for participants to travel to an external training centre or for trainers to travel to a participating organisation's location. Trainees can participate individually or in groups from any location with a fixed line telephone and internet access.

Trainees benefit from:

- four team training sessions of four hours each (two for part 1 and two for part 2) delivered by telephone conference call
- a personal registration for the use of the Business Flight Simulator models online
- interactive computer based tests covering each aspect of the syllabus
- online access to the course tutor's notes
- a printed copy of the online 'Amplifying intuition' material
- two attempts at taking the formal assessment leading to the certificate
- continued use of the Business Flight Simulator models for a year after qualifying
- email contact with your course tutor between training sessions.

You monitor your progress throughout the course via interactive tests. Multiple choice questions provide you with immediate feedback and your course tutor can then help you with any areas that require further study. In between the training sessions, you can revisit the simulation models at any time to ensure that you are really comfortable with the concepts and the test questions.

When can I attend the virtual classroom sessions?

The following courses will be held during 2009. Sessions run from 1.30-5.30pm.

The session dates that were known when this document was generated are listed below. The latest details are provided online at www.amplifying-intuition.com/events.html so please check for updates or changes. Every effort will be made to adhere to these dates and times but the right is reserved to change them where necessary. It is expected that additional dates will be added to this list in future months.

	Q2 2009	Q3 2009	Q4 2009
Part 1 session 1	Wed 1 April	Wed 1 July	Wed 7 October
Part 1 session 2	Tue 28 April	Tue 7 July	Tue 13 October
Part 2 session 1	Tue 19 May	Tue 1 September	Tue 10 November
Part 2 session 2	Wed 3 June	Wed 16 September	Wed 25 November

What do I need to participate in a virtual classroom session?

You will need to base yourself in a quiet location such as a conference room or home study. You will need a landline telephone that can be operated as a handsfree speakerphone (or a reliable Internet phone, such as a Skype headset) and a personal computer equipped with a wireless or hard wired local area network interface connection to broadband internet. Your software must include a web browser, and this must be Windows Internet Explorer if you wish to access the Instructor's slides.

If you have not yet confirmed that the Simulator works correctly on your computer please visit: www.metapraxis.com/bfsc

If the animated financial model does not appear within a few seconds, follow the installation instructions for Flash and Javascript. These are standard applications but if you cannot install them, please seek advice from your IT department.

Please ensure that you have your computer's power supply and power cord as the simulations are very demanding on battery power. Once you have been issued with printed versions of the course materials, these should be brought too. Paper, writing instruments and a pocket calculator will also be helpful.

What is the assessment process?

Assessments are made at the end of part 1 and part 2 which are delivered online at an assessment centre. You can sit the part 1 and part 2 assessments separately or at the same session. Once you have successively completed both parts, your Business Flight Simulation Certificate will be issued by CIMA.

There are no fixed dates for sitting the assessments, so you can decide when to sit them to fit in with your study time and availability. The pass mark for each assessment is 65% and you will normally be told immediately on completion of the assessment whether you have been successful.

How much does this training programme cost?

Course fees per trainee (exc. VAT):

£1,200 for the whole course (parts 1 and 2)

£600 per part if booked separately.

£60 for further attempts at the course assessment after the first two attempts

Are special terms available for CIMA and BCS members?

The individual subscription is reduced for trainees who are CIMA or BCS members, or a member of another organisation that has arranged affiliate terms for the certificate. The extent of the reduction depends on the terms set out in the affiliate voucher that is provided on the organisation's website.

For further details please contact:

Anne Stephenson, CIMA BFSC Course Co-ordinator,
Metapraxis Ltd, Hanover House, Coombe Road, Kingston upon Thames, Surrey KT2 7AH

T. 020 8541 2743 F. 020 8546 2105 E. anne.stephenson@metapraxis.com

